

A full-page background image of tennis player Rafael Nadal celebrating a victory at Wimbledon. He is wearing a white Nike shirt and white shorts with a checkered pattern, holding his tennis racket high in his right hand and his left fist in the air. The background is a blurred crowd of spectators in the stands.

SW19

The essential guide to visiting Wimbledon

#VisitWimbledon

WIMBLEDON DIARY

The best events in town

TOP TICKETS

How to catch
all of the action

WHERE TO DINE OUT

Legends of Wimbledon

Tennis heroes gather in SW19

time &
leisure
MAGAZINE

Contents



03

What's on events diary

08

Tennis heroes at No 1 Court

12

How to get a coveted ticket

15

Where to watch the action

17

Photographing the tennis

22

Where to eat & drink

32

What to see in the area

THE DIARY

**The tennis is cause for all
sorts of celebrations.
Here's our pick of what's on**

CHEERS TO THAT...

17 JUNE – 28 JULY

Over the course of Wimbledon, Elys will be celebrating by inviting you to toast the Championships with a glass of Lanson Champagne. The distinctly fresh and delicious tippie will be served up daily until July 28.

www.elyswimbledon.co.uk

Turn over for more >>

WALK THE VILLAGE...

While the world will be mostly concentrating on the bitter rivalries playing out on the court, there is another competition taking place in Wimbledon - the annual window display contest. Every year, shops take part in transforming their front to fit with the tennis theme. Competitors decorate with lawns, nets and plenty of tennis balls and rackets in the hope of being crowned the window of the year by the independent judges.

www.wimbledon-village.com



CAPTURING THE ACTION...

24 JUNE - 14 JULY

New York Times-published Wimbledon photographer, Duncan Grove, will be showcasing his body of tennis photography for the sixth free exhibition at Wimbledon's Hotel du Vin. Duncan's upcoming AELTC-approved exhibition is a culmination of 10 years of work, with some key moments in Wimbledon's history, like Murray's historic Wimbledon win, documented with prints on the walls.

www.duncangrove.com



LIVING LEGEND...

1 - 14 JULY

Join Centre Court shopping mall to celebrate the Lawn of the Legend! On 1 July, the mall will be building Andy Murray's LEGO mosaic wall, and on 3 July make and take home your own LEGO tennis balls.

www.centrecourtshopping.co.uk

© Duncan Grove

PARK LIFE...

13 - 14 JULY

Fulham Palace will be hosting a big screen on the green so you can catch the action among the roses of the gardens, plus there will also be plenty of other activities on to mark the occasion, with live music, pop-up films, gourmet food, and more.

www.bigscreenonthegreen.com

COMING HOME

This season is the last before AFC Wimbledon move to play at their spiritual home on Plough Lane, once home of the famous "crazy gang". The remarkable story of this football club continues, catch their pre-season friendlies against Brentford (5 July), Bristol (9 July) and Crystal Palace (30 July) at The Cherry Records Stadium.

Tickets: www.afcwimbledon.co.uk



TENNIS FOUNTAIN

1 - 14 JULY

The Wimbledon Foundation has teamed up with WaterAid to create a spectacular fountain of some 2,631 tennis balls to mark the number of lives that could be saved on average each day if everyone had clean water. It was on display in Greenwich Park and will be on display next to the queue for Wimbledon.

www.wateraid.org

CELEBRATE THE START OF THE ACTION...

29 JUNE; 3pm

The Old Frizzle will be kickstarting the season with a Wimbledon party where you can enjoy the sun from the terrace, enjoy some free g&ts, plus live music from 9pm.

29 June; 3pm

www.theoldfrizzle.co.uk

...AND THE MIDDLE!

6 JULY; 9pm-1am

One of the busiest nights of the Wimbledon fortnight, the Village's much-

loved Dog and Fox pub will be putting on a special evening of live music, celebrating reaching the middle of the tournament.

www.dogandfoxwimbledon.co.uk

SUMMER EVENING WALK

10 JULY FROM 7pm

Join the Wimbledon and Putney Commons Senior Management Team for an evening guided walk around Putney Lower Common to learn about its conservation work and the history of the site

www.wpcc.org.uk/things-to-do/events

REVITALISE AND REJUVENATE

Take Time London boutique, situated in the heart of Wimbledon Village, invites you to unwind and rejuvenate your body, mind and soul. Whether it's 15 minutes for a 'Tidy Brow Time' or an hour for a customised luxury pedicure, the Take Time team will inspire you to make the most of every moment. Our products are always proudly cruelty-free, vegan and non-toxic.

Quote Time & Leisure and receive 20% off your first nail, brow or lash treatment.

TAKE TIME LONDON

21 Church Road, Wimbledon Village SW19 5DQ
020 8944 7096, www.taketimelondon.co.uk

READER
OFFER





time &
leisure

WEEKEND

Your essential guide to
What's On, plus exclusive
competitions and great
reader offers

CLICK HERE TO JOIN



SUPREME COURT

Tennis stars celebrate the new roof on No.1 Court and come together to help the homeless of Merton and Wandsworth



Before the first ball had been served at this year's Wimbledon Championships, a star-studded line-up of players including Venus Williams, Jamie Murray, Pat Cash and Martina Navratilova, together with crowds of fans, flocked to the immaculate lawns of SW19 for a special afternoon of tennis and music to celebrate the completion of the No.1 Court roof project. The event not only gave the new roof a test run but more importantly raised money for key charities around the local area.

After playing his mixed doubles match, alongside Kim Clijsters, Martina Navratilova

and John McEnroe, Brit tennis star Jamie Murray said: "It was a lot of fun and such a cool thing to be a part of. I remember watching on TV when they had the opening of the Centre Court roof and it was a really iconic moment for the Club and I'm sure this is as well."

**"I've always loved Court 1,
it's just a little closer
and it's got a great
atmosphere,"** *Pat Cash*



Discussing how the roof impacts the atmosphere on No.1 Court, Jamie added: "It's louder, obviously, I mean the noise doesn't get lost. Everything's enclosed so you probably get a better atmosphere."

This was Jamie's first return to the SW19 courts in front of fans this year and it seems the novelty doesn't waver. "I love it," Jamie said. "I'm fortunate enough to be a member here so I can come and use the Club during the year but it's totally different to when The Championships run and you're playing in front of a lot of people, and we always get great support. For me it's always fun to come out and play in front of a lot of people. That's what inspired me or motivated me growing up, to try to be a professional tennis player."

A Roof For All

Two years in the planning and three years in build, for the first time in 142 years, No.1 Court's spectators and players were shielded from the elements by a brand new retractable roof.

Thrilled to also be back on the courts of Wimbledon, Venus Williams said: "It was surreal being able to be back here without the tournament. It made me actually really grateful to be able to play this game and have some reflection over the years. It was a great experience."

Commenting on the new roof, Venus said: "You hear that echo of the ball and you hear the crack. It is like a whip. It was great to not only be out here for the opening but for a great cause."

The cause Venus refers to is the Wimbledon Foundation, the charity of The All England Lawn Tennis Club and The Championships. This year, the Wimbledon Foundation has partnered with the London Community Foundation to create a fund for the homeless named 'A Roof For All', which will be the beneficiary of a proportion of ticket proceeds from The No.1 Court celebration.

While No.1 Court will have a roof from this year onwards, an increasing number of Londoners are forced to live without a roof over their heads. The new fund will help to tackle homelessness locally in Merton and Wandsworth. The fund will provide grants to homelessness charities operating in the local areas to help them increase their capacity and sustainability while delivering invaluable services for the homeless. Further funds will be used to help larger pan-London charities.

Merton Council's Cabinet Member for Health, Councillor Tobin Byers said: "Homelessness can affect anyone at any time for many reasons. The new funding

will enable our community to do more to support homeless people, many of whom face multiple and complex challenges.”

Wimbledon now joins the Australian Open and US Open in having two roofed courts. Melbourne Park has three, while the French Open will open its first next year. Martina Navratilova, who played in the mixed doubles show match, believes the atmosphere will be even more electric with the new roof.

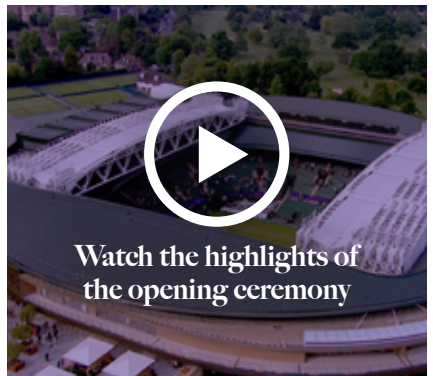
“The sound definitely stays in,” said Martina. “It definitely gets louder. When everybody applauded... it really reverberates and it’s great and it makes you feel a part of it.”

Also returning to No.1 court was fan favourite Pat Cash who battled it out in the gentlemen’s doubles. “Well, what a fantastic Club, I have the opportunity because I live in London to come in and visit the Club, but to get to play on Centre Court or Court 1, it just doesn’t happen.”

“Even as a member I might be able to sort of wink at the groundsman and say ‘can you get me Court 2 or 3’, and they’ll go ‘oh maybe’, but never Court 1 and never with this beautiful new roof, it really does feel like Centre Court.”

www.wimbledon.com

THIS YEAR'S
WIMBLEDON
CHAMPIONSHIPS
RUN 1 TO 14 JULY



All images © AELTC

Just the ticket

Given the popularity of the Championships, it's no wonder it's notoriously difficult to get your hands on Wimbledon tickets. Whether you're keen to enter the ballot, join the famous queue, or even stay the night to bag a place, we've got the ultimate guide to securing a spot...



JOIN THE QUEUE

Every day, around 500 Wimbledon tickets are released for those keen to catch the action on Centre Court, No 1 Court and No 2 Court, apart from the last four days of the tournament, when even queuing won't bag you a Centre Court ticket as these are sold well in advance. As well as the daily tickets on the door, there are thousands of Grounds Passes available each day at the turnstiles, entitling use of unreserved seating and standing on Courts 3-18. Once you're in with a ground pass, you can purchase resale tickets, with No.1 Court tickets going from as little as £10. As Brits, we do love a good queue, and, as you would expect, there are a handful of rules and regulations in place to make this particular line extremely strict. Tennis fans are given a queue card marking your spot in line to avoid queue jumpers, and bags are vetted and should be no bigger than 60cm x 45cm x 25cm.

TRY THE BALLOT

It is obviously too late to try your luck with the ballot for Wimbledon 2019, but if queuing is not your style, remember to go for the ballot for next year's tournament. The applications for 2020 open in August and involve a hefty registration process that can't be done digitally. To apply, fill in the application manually, and send it off in a stamped and addressed envelope to AELTC, PO BOX 98, London, SW19 5AE. You'll then get another application form sent back to you which you send off to AELTC, PO BOX 67611, London, SW19 9DT. You'll then be notified if you are successful for ballot tickets, but with the thousands of annual applications, it's not guaranteed.

STAY THE NIGHT

For those extremely enthusiastic about getting their hands on a precious Wimbledon tickets – particularly Centre Court or Court One tickets, dig out your camping gear and head to Wimbledon Park the night before. This will increase your chances of getting your hands on one of the top 500 Wimbledon tickets which are allocated to Centre Court, and the following top 500 which go to Court 1. Don't worry about sleeping in and missing

your spot, because patrolling stewards wake you up early in the morning, ask you to dismantle your tent and issue wristbands to make sure you get your spot.

TICKETMASTER WIMBLEDON TICKETS

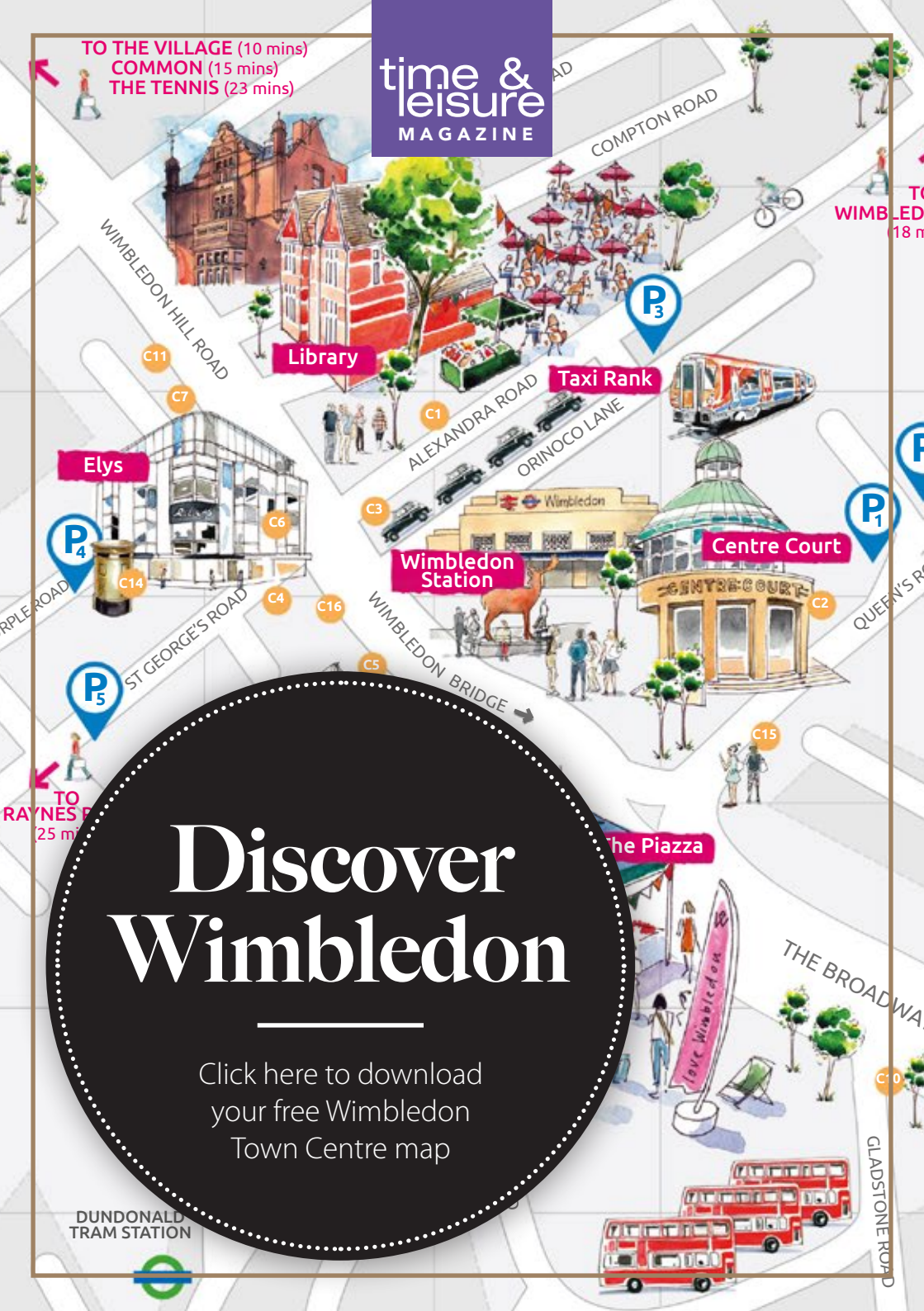
If camping isn't your thing, you can get your hands on Wimbledon tickets online, but beware that Ticketmaster is the only online spot to go for Wimbledon tickets, and avoid looking at any other sites which may be trying to rip you off. Every day at around 9am, around 500 Centre Court and No 3 tickets are released on the site for the next day of play. The tickets, obviously, sell out extremely quickly, so set your alarm and be prepared to keep hitting that refresh button.

HOSPITALITY TICKETS

Not the option for anyone on a budget, the hospitality packages start at £400 per person, but are great if you're keen to grab a ticket last minute. The packages are on offer from providers like Sportsworld and Keith Prowse and are sold with a variety of VIP extras like food and drinks bundles, afternoon tea and first-class hospitality.

TO THE VILLAGE (10 mins)
COMMON (15 mins)
THE TENNIS (23 mins)

time & leisure
MAGAZINE



Discover Wimbledon

Click here to download
your free Wimbledon
Town Centre map

DUNDONALD
TRAM STATION

Where to watch

No ticket? No problem. Here are some of our favourite screening spots where you can catch all the action.



THE PIAZZA

Where better to watch the sets play out than in the heart of Wimbledon. The cheery market square will be hosting a big screen pop up in the town's Piazza, complete with deck chairs.

1-14 July; 12pm-9pm, Wimbledon Piazza
www.lovewimbledon.org

THE DOG AND FOX

Right in the heart of Wimbledon Village, the Dog and Fox pub offers a great location just a stone's throw from the iconic grounds. The pub will be screening all the games across six television screens and visitors can also make their way to the enchanting beer garden and watch the tennis in the glorious July sunshine.

1-14 July; 8am-10pm, Wimbledon Village
www.dogandfoxwimbledon.co.uk

BIG SCREEN ON THE GREEN

Fulham Palace and Morden Hall Park are just two of the locations that have been scheduled to show Wimbledon tennis 2019, with huge open-air screenings in the park, plus live music and food stands offering tasty cuisines to hungry

sports fans. Bring along a picnic blanket and some Prosecco and make the most of the sunshine and picturesque setting.

1-14 July, Various locations
www.bigscreenonthegreen.com

WIMBLEDON AT THE HAND IN HAND

Close to all the action and a short walk away, Wimbledon's the Hand in Hand will be screening the biggest matches with a guaranteed great atmosphere to boot.

1-14 July; 12pm-4pm
www.thehandinhandwimbledon.co.uk

THE OLD FRIZZLE

Wimbledon's much-loved local pub has a great back room that lends itself to sporting events like Wimbledon. The Old Frizzle will be serving Pimm's-a-plenty and showing every second of all the matches so you don't miss a nail-biting moment. The two-week tennis fest will be kickstarted with a tennis party, with gin tastings and live music.

Wimbledon kick-off party on 29 June.

1-14 July, The Broadway
www.theoldfrizzle.co.uk

STRAWBERRIES AND SCREEN

Taking place on the Square's green running track, the finals will be shown on a giant screen. There will be picnic hampers available from Partridge's and a pop-up stall selling strawberries and cream throughout the weekend. In addition, Pretty Little Tea Company will be serving Prosecco,



Strawberries and Screen

Pimm's, Peroni, tea, coffee, hot chocolate, homemade cakes, ice cream tubs and strawberries & cream on both Friday and Sunday, with Partridge's annual pop-up bar returning on Saturday. For the little ones, there will be professional tennis coaching on the Square, offering complimentary lessons for youngsters to master their best Wimbledon-esque moves.

12-14 July; see website for prices, Chelsea
www.dukeofyorksquare.com

BLUEBIRD

Chelsea's beautiful Bluebird will be opening its doors for you to watch the drama of the tournament unfold while enjoying lunch or a cocktail in the courtyard. The Chelsea establishment will also be reinstalling its tennis ball decoration to get you in the spirit.

1-14 July, Bluebird, Chelsea
www.bluebird-restaurant.co.uk



Through the Lens

We talk to Wimbledon photographer Duncan Grove about how he captures the action and his favourite moments over the years



Arriving at Duncan's studio on a rainy day in April, the proximity of the Wimbledon practice grounds to his office window is startlingly close – the gleaming lawn still pristine despite grisly weather. "We're just 500 metres away from Centre Court," he proudly discloses. Being so close to the lawns is an ever-present reminder of the photographer's inspiration and is handy for the self-confessed tennis



photography obsessive. Duncan's time photographing the most famous tennis tournament is full of excellent anecdotes – and it's this fun side of Wimbledon that he likes to capture – from the cheeky tennis bums of the Williams sisters he has framed in his office, to his shot of Andy Murray's wedding ring tied to his shoe – stories that narrate and capture the personal.



Duncan's AELTC-approved exhibition at Hotel du Vin is a culmination of 10 years of work, with some key Wimbledon moments, like Murray's first Wimbledon win, documented. Year on year, Hotel du Vin hosts over 100 of Duncan's fine art limited edition prints as part of the summertime buzz, the great and the good often staying within the esteemed hotel's walls and players like Novak Djokovic visiting and signing prints.



Duncan's palpable passion for photography started out as a mere hobby, after capturing a shot of an opulent hotel in France that propelled him into a life-long love of photography. After joining the Malden and Kingston camera clubs and winning a competition, Duncan took his love for photography professional. "I became obsessed and read every photography magazine. I really taught myself."

After 10 years of photographing Wimbledon, Duncan has been there for the sporting highs and lows. "The atmosphere for Murray's Wimbledon win in 2013 was the most amazing atmosphere I witnessed." He also nods to an aesthetically satisfying photograph of Roger Federer on the wall where his hands and feet are perfectly framed in a star shape. Another is a series of shots he enthusiastically shows me of a chuffed Murray gazing in adoration at his trophy and dropping the lid on the floor. "That trophy is kept in a hermetically sealed cabinet for 364 days of the year, and there's Andy dropping it on the floor!"

Duncan's shots are characterised by bright sunshine and strong shadows that highlight muscular definition on the players' bodies. "You know when you've taken a good shot, but it's the time of day which makes the difference." There is one photography position he describes called 'up in the Gods'. "It's right in the top and looks down onto Centre Court. At about 5pm it's the golden hour and you get that lovely light."

**"The atmosphere for
Murray's Wimbledon
win in 2013 was the
most amazing
I have witnessed"**



For Duncan, what makes Wimbledon stand out from the crowd is the friendly atmosphere. He reflects: "I shot the 2013 final when Murray won and I shot the trophy shots on court and was working my way around the outside of Centre Court. I had three cameras – a big heavy one under one arm and another one around my neck and it was a blisteringly hot day.

The crowds were so dense that I couldn't move. Someone came with what I thought was a punch at me, but he was actually grabbing hold of his sleeve and dabbing my brow. That's the difference between a football match and a tennis crowd!"

Images can also be viewed
at www.duncangrove.com

**DUNCAN'S
EXHIBITION RUNS
24 JUNE - 14 JULY
AT HOTEL DU VIN
WIMBLEDON**



All images © Duncan Grove

Explore Wimbledon Village

Click here to download
your free Wimbledon
Village map

Where to eat

SW19 may be overwhelmingly associated with strawberries and cream, but there is far more adventurous foodie fare waiting to be discovered

THE GIGGLING SQUID

This cosy Thai restaurant brings vibrant and colourful plates packed with zingy Thai flavours to the heart of Wimbledon Village. Visitors to the Giggling Squid can enjoy classic Thai dishes in a small plate tapas style or go for generous sharing platters. Main menu options include authentic stir-fries accented with the traditional hint of lemongrass, coconut milk, and warm ginger. The interior of this Wimbledon restaurant adds to the customer experience, with a colour scheme complemented by a pretty floral display.

www.gigglingssquid.com



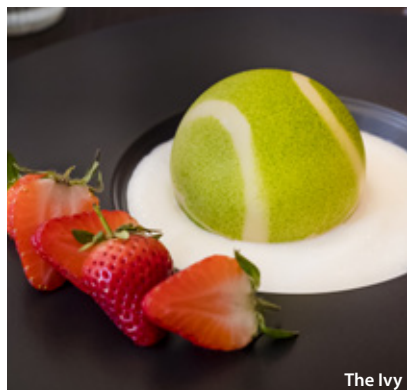


San Lorenzo

SAN LORENZO

This family-run Italian restaurant is a long-term favourite. San Lorenzo this year celebrates its 50th birthday, having gained an excellent reputation for fine dining. Its elegant service appeals to both Wimbledon residents and famous faces including tennis greats. Among its loyal returning customers are members of London's Italian community who come time and time again for fond memories of home. Authentic dishes of fresh pastas, risottos and perfect pizzas can be found on the menu. More often than not finished off with a limoncello or two.

www.sanlorenzowimbledon.com



The Ivy

THE IVY

One of London's most stylish restaurant brands, The Ivy has been frequented by the city's well-heeled residents since the turn of the 20th century. In recent years, it has branched out to the capital's leafy suburbs including Wimbledon. Service at this stylish restaurant is impeccable and the interior boasts a chic Art Deco-esque style. The menu offers a wide selection of cuisine from the Continent and beyond including the absolute classic steak frites with a succulent, grass-fed, prime centre cut, plus they offer private dining upstairs..

www.theivycafewimbledon.com



White Onion

WHITE ONION

A much-loved independent French restaurant in the heart of Wimbledon Village, the White Onion brings a taste of the Continent to the Wimbledon restaurant scene with dishes such as Wagyu beef bavette and rabbit and pan fried

sea bass. Ingredients are locally sourced and are immaculately presented for the ultimate French fine dining experience. In the summer months, light pours in through the large glass windows that look out onto the charming village streets. During the colder months, the French bistro welcomes diners with its hearty French dishes and cosy atmosphere.

www.thewhiteonion.co.uk

ROXIE

New kid on the block just a stone's throw from Wimbledon station, Roxie's speciality is South African cuisine meaning it's a meaty affair. This Wimbledon restaurant is well located at the bottom of Wimbledon Hill and surrounded by bustling pubs. Carnivores can pick from an array of butcher's cuts and rest assured that Roxie works with family-run suppliers to

source only the best steaks. There is also the option to double up and go for the butcher's feast. Featuring flat iron, hanger, and picanha, all this comes with fries, and a beef dipping jus.

www.roxiesteak.co.uk

HOLY SMOKE

Slightly off the beaten track, Holy Smoke restaurant is worth the venture out of Wimbledon town centre. The décor is simple and discreet like the restaurant itself but don't be fooled by the stripped back interior – the food is of top quality. Favourites on the menu include the roasted guinea fowl with butter confited shallots and baby carrots. To finish, there is a great cheese board featuring goats cheese, blu in vinaccia with flatbreads and preserves with white truffle honey.

www.holysmoke.london

BLACK RADISH

A stylish dinner option, Black Radish brings together a taste of France with a modern twist. The menu is small and minimalistic like the intimate venue, but certainly packs a punch with adventurous and exotic flavours. Menus are determined by the seasons and foodies can also take delight in the exceptional tasting menu. Black Radish brings a modern contemporary menu to the Wimbledon restaurant scene.

www.blackradishsw19.com



CREAMS BRITISH LUXURY WIMBLEDON

Enjoy a delicious afternoon tea at CREAMS, Wimbledon Broadway, opposite the Piazza. It offers breakfast, hot snacks, and gourmet sandwiches and delicious sweet treats for you to indulge in. It also specialises in an amazing traditional afternoon tea, speciality teas and coffees, delicious cakes & patisseries, milkshakes, waffles, ice-creams, sundaes and of course its 12 flavours of infamous macarons. This is the ideal place to head to if you are out and about in Wimbledon.

18 The Broadway, Wimbledon, SW19 1RE 020 8947 5320



PATARA

Another contender for top of the Thai in Wimbledon is the oh so sleek Patara. The fine dining Wimbledon restaurant serves up a mixture of authentic Thai dishes in a stylish setting. The interior marries clean lines with wooden furnishings which adheres to the minimalist style mirrored in the menu. Top of the dishes on offer include the wild ginger beef. This involves a beef fillet stir-fried with fresh chilli, lemongrass, kaffir lime and green peppercorn, served alongside tender stem broccoli. There is also a great selection of vegetarian dishes.

www.pataraLondon.com



Win a two-night stay at luxury hotel Conrad London St. James

[Click here to enter](#)



EXCLUSIVE
TIME & LEISURE
COMPETITION



Where to drink

From traditional pubs to fantastic bars, here's our guide to the best Wimbledon drinking spots to enjoy a tipple.

601 QUEENS RD

In the past, it was known as The Terrace Wimbledon, but since a major revamp last year by the Darwin & Wallace collection of restaurants, 601 Queens Rd in Wimbledon town above Centre Court, is now a contemporary space serving up a wide range of drinks from the circular bar. During the day it's a brunch haven, but as night falls, 601 becomes a trendy hangout for those looking for good food and conversation. Head outside to the terrace, and enjoy al fresco drinking and dining, too.

www.601queensrd.co.uk



THE ALEXANDRA

Close to Wimbledon Station and at the heart of the community The Alexandra on Wimbledon Hill is really popular with sports fans – and is a great spot to watch Wimbledon Tennis on the multitude of screens. With bespoke gins, cocktails and craft beers as well as classic dishes such as pies and scampi and chips, as well as three different bars in which to enjoy them in – Sports, Lounge and Green – you'll find plenty of space to kick back and relax. Meanwhile, head upstairs to The Alexandra's fantastic outside space the Loft and soak up the sunshine and enjoy one of their famous burgers from the BurgerShack.

www.alexandrawimbledon.com



THE DOG & FOX

The Dog & Fox is an institution of Wimbledon Village and, having been around for hundreds of years, it's a popular drinking spot for regulars as well as Wimbledon Championships spectators who like to soak up the atmosphere in the large beer garden. With an extensive food menu and a large selection of fine wines, ports and craft beers, visitors will be hard-pressed not to find something to whet their appetites.

www.dogandfoxwimbledon.co.uk

HEMINGWAYS

Hemingways was awarded 'best south London cocktail bar' for good reason. In the heart of the action in Wimbledon Village, forget the beer in this independent cocktail bar. Instead try signature drinks such as Mad About Yuzu – a concoction of Belvedere Vodka, Yuzu Sake, Aperol, alongside lemon, ginger and lemongrass





cordial to whiskey sours. During the summer, sip a cooling Lychee Spritz and nibble on some flatbread and hummus as you watch the world go by.

www.hemingwaysbar.co.uk

THE SUBURBAN BAR & LOUNGE

Not only can you get great cocktails at the Suburban Bar & Lounge, but the daily happy hour is great value for money, too. This isn't a bar for 'quiet' drinks with friends, combining a 50-strong menu of different cocktails including timeless classics such as Pornstar Martinis and Old Fashioneds, and bar nibbles such as meat platters, as well as brilliant tunes. The Suburban is a lively place to let your hair down.

www.suburbanbar.com

SMASH

If you're looking for a bar in Wimbledon

which is a bit different from the norm then head over to SMASH on Wimbledon Broadway where you'll be able to take a drink with friends as well as show off your silky ping pong moves! With over 60 different craft beers and ciders to choose from, classic cocktails and traditional homemade Italian pizzas on the go, there is much fun to be had. Once you tire of table tennis, kick back and relax on one of the many comfy sofas and perhaps try a Ginny Dog – Tanqueray gin mixed with blueberries and blackberry liquor and topped with SMASH Lager.

www.smashbars.co.uk/wimbledon

HAND IN HAND

The quaint The Hand in Hand used to be a baker's house – you can even take a meal in the old oven area. The pub, which has been around since 1835, is



The Fire Stables



popular with not only Wimbledon residents but visitors who are looking for a decent pub and grub. It has a great location on the edge of Wimbledon Common and close to Wimbledon Village, and is also very proud to be dog-friendly, even offering canine treats and the chance for visiting pooches to be their coveted Dog of the Day!.

www.thehandinhandwimbledon.co.uk

THE FIRE STABLES

The Fire Stables is upmarket bar meets relaxed dining experience. In an informal atmosphere and comfortable surroundings, you can enjoy the breeze on your face during the summer when the huge bi-fold doors open up – as well as soak up the atmosphere of Wimbledon tennis, which is only just down the road. An extensive wine list, as well as local and craft beers, plus a menu showcasing fine British produce, the Fire Stables is a good shout for all – it's even family and dog-friendly, too.

www.firestables.co.uk

THE ROSE & CROWN

Looking for a traditional Wimbledon pub with a strong heritage? The Rose & Crown, which can be found close to Wimbledon Common as well as a 10-minute stroll to the Lawn Tennis Club, makes for an ideal spot. With pub quizzes, live screenings of all the top sporting events, whiskey tastings and more, the Rose & Crown is truly a Wimbledon Village pub with heart. Meanwhile, with an unusually large outside garden, there's plenty of room to enjoy a pint and a burger in warmer weather.

www.roseandcrownwimbledon.co.uk

A photograph of three women standing on a sidewalk, each holding a shopping bag. The woman on the left is wearing a white long-sleeved shirt and blue jeans, holding a white bag. The woman in the middle is wearing a striped short-sleeved shirt and dark blue pants, holding a black bag. The woman on the right is wearing a dark blue jacket over a black top and striped pants, holding a brown bag. A large black circle with a white dotted border is overlaid on the center of the image, containing the text 'Where to shop in Wimbledon' and a link to a shopping guide.

Where to shop in Wimbledon

[Click here for our guide
to SW19's thriving
shopping scene](#)

WHAT TO SEE

There is an abundance of things to see and do in Wimbledon, whether you want to stroll around parks and gardens, take in a show or gen up on some history

GORGEOUS GREEN SPACES

There is no shortage of beautiful places to discover in Wimbledon, from the wide expanse of the common to manicured parks. Keep your eyes peeled for interesting features - right in the middle of one of Wimbledon Common's open plains is a beautiful, pristine-white windmill that wouldn't look out of place on the outskirts of Amsterdam. The windmill no longer functions as a mill, but its interior has been transformed into an informative museum. Or check out the extensive Wimbledon Park, located right next to the All England Lawn Tennis Club. There is a huge children's park with a paddling pool, water features, climbing structures and play areas for little ones.

Known for its ornamental landscaped gardens and ponds, Cannizaro Park is yet another stunning outdoor space in SW19. Found on the south side of Wimbledon Common, Cannizaro has 34 acres to explore including a Water Garden and Belvedere.

If you're looking for a few hours of fun and to venture out and explore the wildlife and landscapes of Wimbledon Common, then perhaps a riding lesson at Wimbledon Village Stables would be a good option? There are hacking trips across woods and parkland.

CULTURE & HISTORY

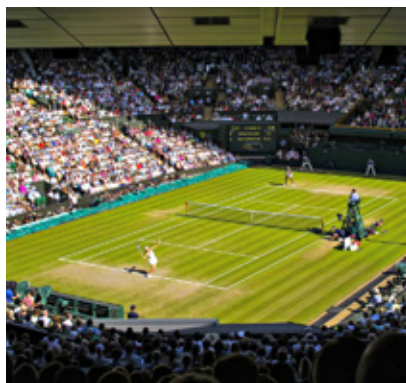
With special exhibitions, there is much to discover in the small and welcoming Museum of Wimbledon. SW19 has a rich heritage and has been home to several notable residents over the course of over 3000 years. The museum has collections from different eras including medieval and Georgian Wimbledon. Discover manuscripts and paintings, as well as 300 artefacts.

Located in Wimbledon Common, the magnificent Southside House and gardens have featured in many films and dramas – and is open to the public for guided tours. The 17th-century Grade II listed building has been the home of the Pennington Mellor Munthe families for generations and tells a wealth of history through several generations.

The Wimbledon Lawn Tennis Museum, meanwhile, is a must for all the history and outside of the Championships, a behind-the-scenes tour is available.

Wimbledon's stunning theatre has been serving South West London for generations, surviving two World Wars and hosting a whopping 106 pantomimes! Now you can step behind the scenes on an exclusive tour, as guides spill the beans on the shows, the stars, and of course a generous helping of gossip and ghost stories! Book now: atgtickets.com/theatre-tours-wimbledon

www.southsidehouse.com, www.wimbledon.com
www.wimbledonmuseum.org.uk
www.thenewwimbledontheatre.com/whats-on



© Peter Dazeley



FROM ALL THE SW19 PARTNERS

We hope you enjoy
Wimbledon 2019

- 1st - 14th July -

[#VisitWimbledon](#)

time &
leisure
MAGAZINE